



Eiropas sociālā fonda darbības programmas „Cilvēkresursi un nodarbinātība” papildinājuma 1.2.1.2.2. apakšaktivitātes „Atbalsts vispārējās izglītības pedagogu nodrošināšanai prioritārajos mācību priekšmetos”. Vienošanās Nr. 2008/0001/1DP/2.1.2.2./08/IPIA/VIAA/002

DATU BĀZES

A. Puste

Datu bāzu lietotnes

- *Microsoft Access*
- *dBase*
- *Paradox*
- *FoxPro*
- *ORACLE*
- *OpenOffice.org Base*
- Lotus Notes



Microsoft Access galvenie objekti:

- tabulas (*Tables*),
- vaicājumi (*Queries*),
- formas (*Forms*),
- pārskati (*Reports*);



Tabulas struktūra

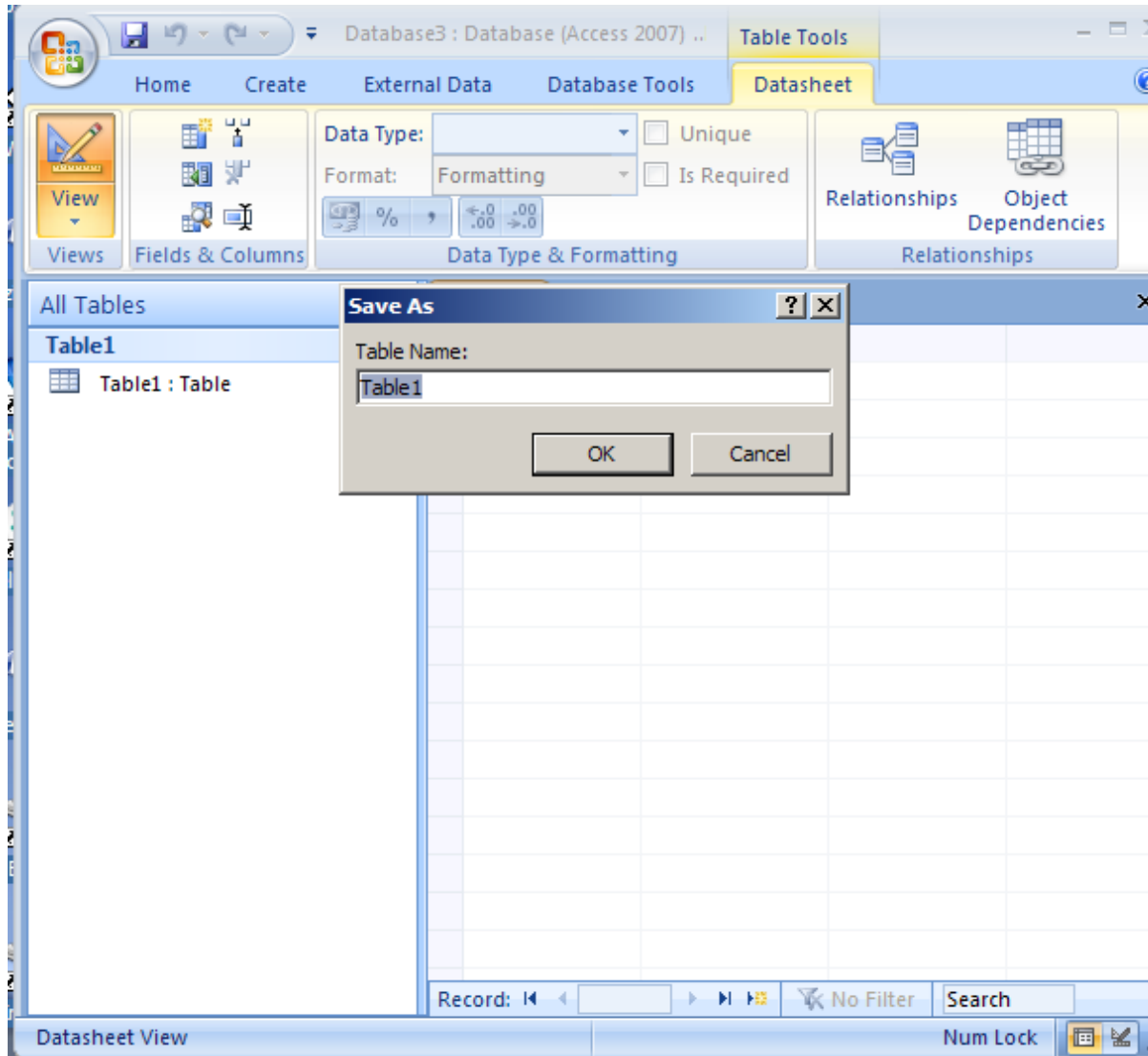
Ieraksts

Vārds	Uzvārds	Personas kods	Tālrunis
Jānis	Egle	101087-11111	6030303
Jānis	Ziema	230985-10011	9123456
Janīna	Pavasare	090955-12345	7654321

Lauka nosaukums

Lauks

Tabulas veidošana



Tabulu veidošanas 1.skats:

- projektēšanas skats
(Design view)

The screenshot shows the 'Klienti : Table' design view in Microsoft Access. The table has four fields: 'Klienta ID' (Text, Description: Personas kods), 'Uzvārds' (Text), 'Tālrūnis' (Text), and 'Izbraukšanas datums' (Date/Time). The 'Field Properties' task pane is open, showing the 'General' tab for the 'Klienta ID' field. The properties are: Field Size: 30; Format: (empty); Input Mask: (empty); Caption: (empty); Default Value: (empty); Validation Rule: (empty); Validation Text: (empty); Required: No; Allow Zero Length: No; Indexed: Yes (Duplicates OK); Unicode Compression: Yes; IME Mode: No Control; IME Sentence Mode: None; Smart Tags: (empty).

Field Name	Data Type	Description
Klienta ID	Text	Personas kods
Uzvārds	Text	
Tālrūnis	Text	
Izbraukšanas datums	Date/Time	

Field Properties

General Lookup

Field Size: 30

Format:

Input Mask:

Caption:

Default Value:

Validation Rule:

Validation Text:

Required: No

Allow Zero Length: No

Indexed: Yes (Duplicates OK)

Unicode Compression: Yes

IME Mode: No Control

IME Sentence Mode: None

Smart Tags:

Tabulu veidošanas 2.skats:

- izklājuma skats (Datasheet view)

Klienta ID	Uzvārds	Tālrunis	Izbraukšanas datums	Samaksāts	Maršruta ID
010175-11121	Liepa	7620620	20.05.2006.	<input checked="" type="checkbox"/>	2
020267-12112	Jostiņš	9123123	20.05.2006.	<input checked="" type="checkbox"/>	2
060788-16321	Avotiņa	3020345	13.03.2006.	<input checked="" type="checkbox"/>	3
120186-10011	Pauls	7123123	13.03.2006.	<input type="checkbox"/>	3
131189-12301	Lapsa	7456678	12.06.2006.	<input checked="" type="checkbox"/>	1
151590-12332	Rubenis	6898989	20.05.2006.	<input checked="" type="checkbox"/>	2
211068-11001	Kārkla	7456789	12.06.2006.	<input checked="" type="checkbox"/>	1
280255-10498	Karlsons	7620181	20.05.2006.	<input type="checkbox"/>	2
301159-10101	Jaunzars	7132345	14.04.2006.	<input checked="" type="checkbox"/>	4

Tabulas struktūra

Ieraksts

Lauka nosaukums

Vārds	Uzvārds	Personas kods	Tālrunis
Jānis	Egle	101087-11111	6030303
Jānis	Ziema	230985-10011	9123456
Janīna	Pavasare	090955-12345	7654321

Lauks

Projektēšanas skats (*Design view*)

The screenshot displays the Microsoft Access interface in Design view for a table named 'Table1'. The ribbon at the top includes 'Home', 'Create', 'External Data', 'Database Tools', and 'Design'. The 'Design' ribbon contains groups for 'Views', 'Tools', and 'Show/Hide'. The 'Tools' group includes 'Primary Key', 'Builder', 'Test Validation Rules', 'Insert Rows', 'Delete Rows', and 'Lookup Column'. The 'Show/Hide' group includes 'Property Indexes Sheet'. The 'Table1' ribbon shows the 'Field Name', 'Data Type', and 'Description' columns. The 'ID' field is selected, and a dropdown menu is open for the 'Data Type' column, listing various data types. The 'Field Properties' pane at the bottom shows the 'General' tab with properties for the selected field.

Field Name	Data Type	Description
ID	AutoNumber	Piezīmes
	Text	
	Memo	
	Number	
	Date/Time	
	Currency	
	AutoNumber	
	Yes/No	
	OLE Object	
	Hyperlink	
	Attachment	
	Lookup Wizard...	

Field Properties	
General	
Field Size	Long Integer
New Values	Increment
Format	
Caption	
Indexed	Yes (No Duplicates)
Smart Tags	
Text Align	General

The data type determines the kind that users can store in the field. Pr help on data types.