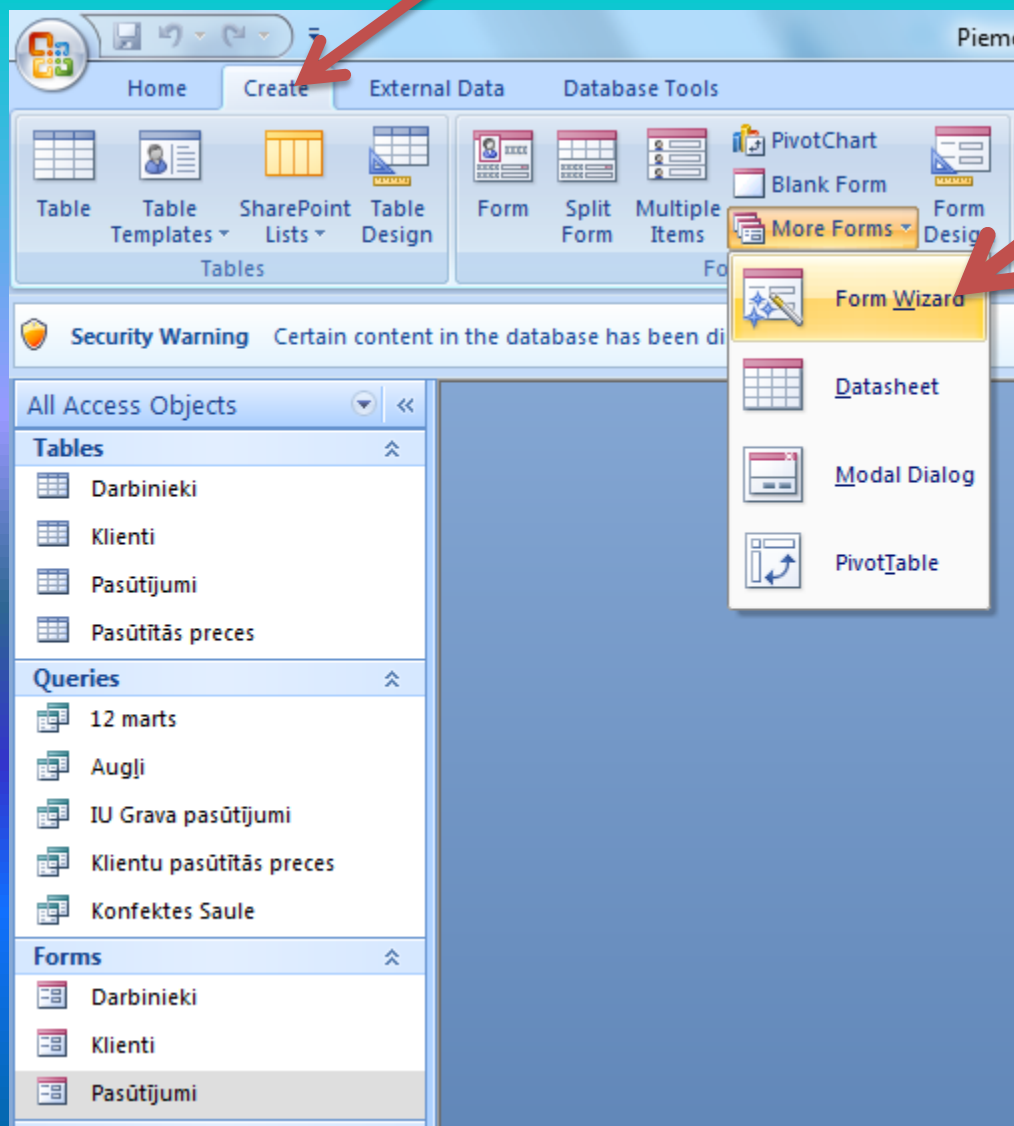




Eiropas sociālā fonda darbības programmas „Cilvēkresursi un nodarbinātība” papildinājuma 1.2.1.2.2. apakšaktivitātes „Atbalsts vispārējās izglītības pedagogu nodrošināšanai prioritārajos mācību priekšmetos”. Vienošanās Nr. 2008/0001/1DP/2.1.2.2./08/IPIA/VIAA/002

# Datu bāzes FORMU VEIDOŠANA Aija Puste

# Formu veido izmantojot vedni



# 1.solis

Form Wizard

Which fields do you want on your form?  
You can choose from more than one table or query.

Tables/Queries  
Table: Pasūtījumi

Available Fields:  
Pasūtījuma ID  
Klienta ID  
Darbinieka ID  
Pieņemšanas datums  
Izpildes datums

Selected Fields:

Cancel < Back Next > Finish

# Izvēlās tabulu vai vaicājumu!

Form Wizard

Which fields do you want on your form?  
You can choose from more than one table or query.

Tables/Queries

Table: Pasūtījumi  
Table: Darbinieki  
Table: Klienti  
**Table: Pasūtījumi**  
Table: Pasūtītās preces  
Query: 12 marts  
Query: Augļi  
Query: IU Grava pasūtījumi  
Query: Klientu pasūtītās preces  
Query: Konfektes Saule

Fields:

Cancel < Back Next > Finish

# Izvēlās laukus, kurus pievienos formai!

Form Wizard

Which fields do you want on your form?  
You can choose from more than one table or query.

Tables/Queries  
Table: Pasūtījumi

Available Fields:

Selected Fields:

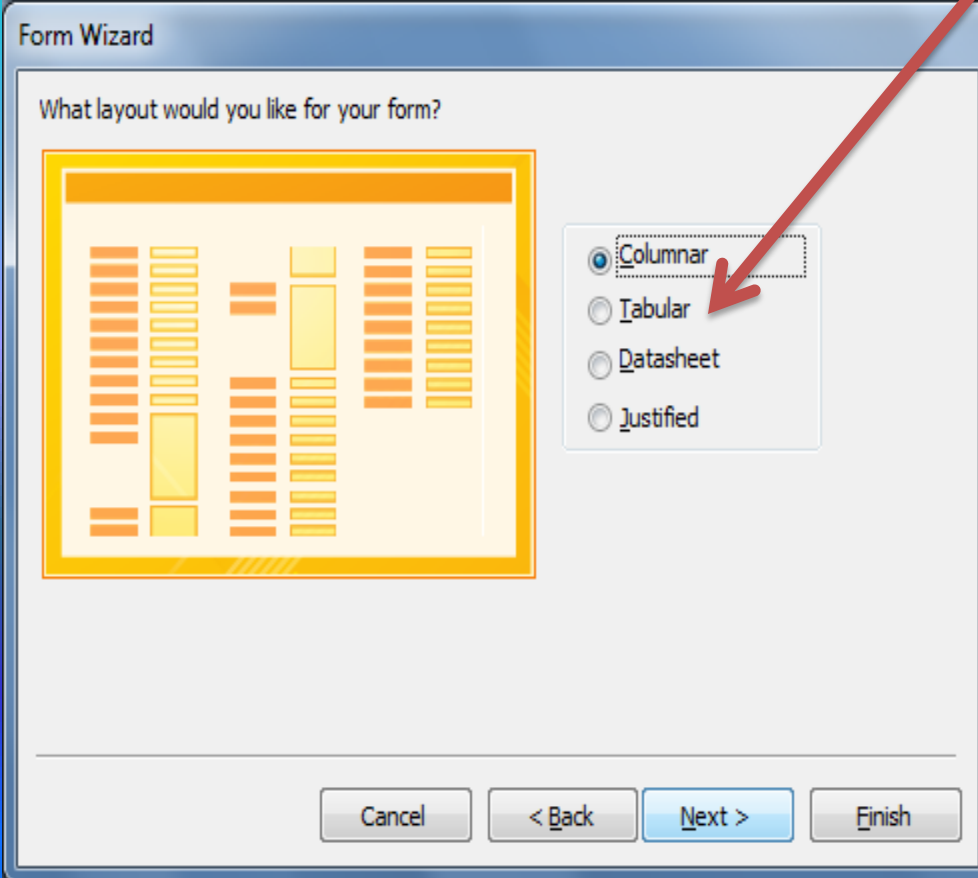
- Pasūtījuma ID
- Klienta ID
- Darbinieka ID
- Pieņemšanas datums
- Izpildes datums

Cancel < Back Next > Finish

# 2.solis

Form Wizard

What layout would you like for your form?

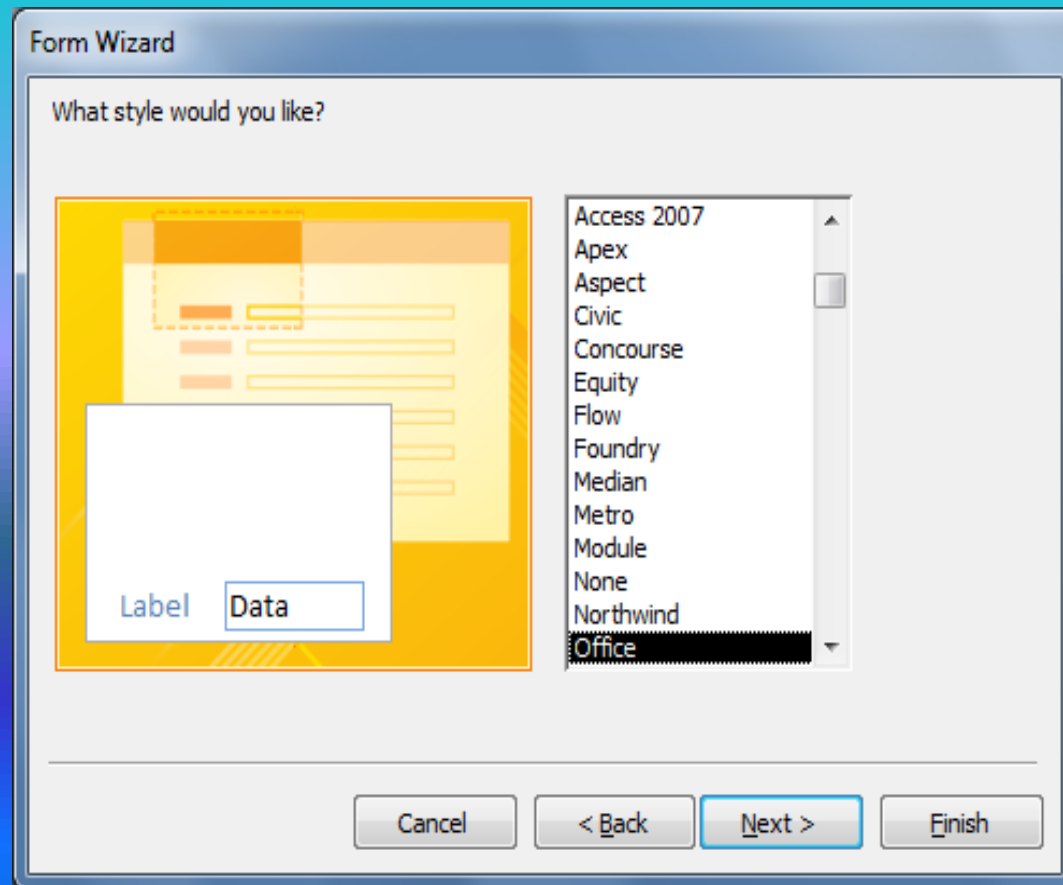


The dialog box displays a preview of a form layout on the left, which is a grid of orange and yellow rectangular fields. On the right, there are four radio button options: 'Columnar' (selected), 'Tabular', 'Datasheet', and 'Justified'. A red arrow points from the top right corner of the slide towards the 'Columnar' radio button.

Columnar  
 Tabular  
 Datasheet  
 Justified

Cancel < Back Next > Finish

# 3.solis



# 4.solis

Form Wizard

What title do you want for your form?

Pasūtījumi 1

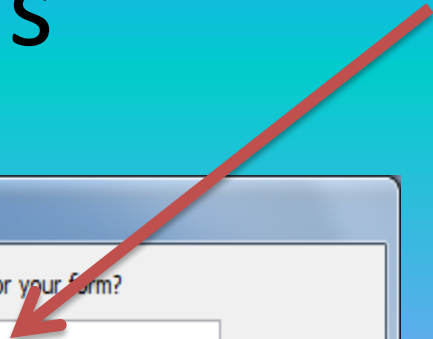
That's all the information the wizard needs to create your form.

Do you want to open the form or modify the form's design?

Open the form to view or enter information.

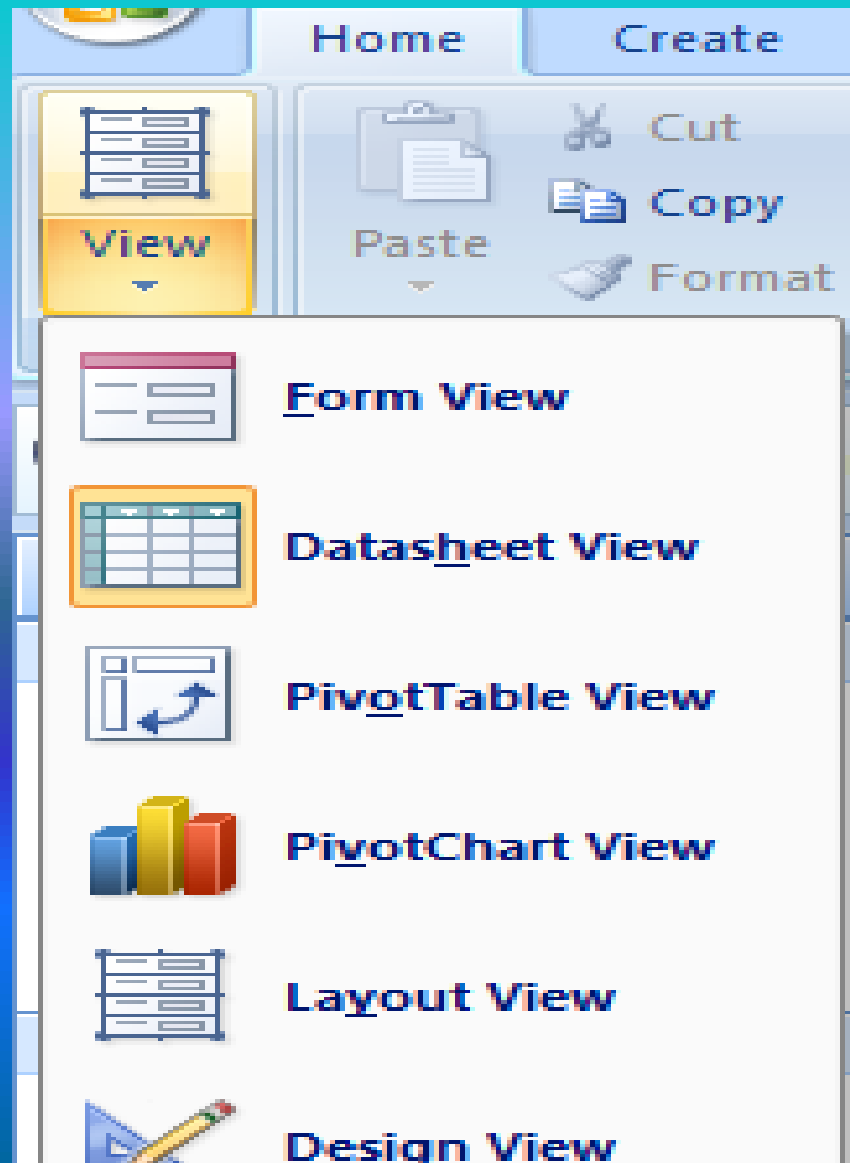
Modify the form's design.

Cancel < Back Next > Finish





# Formas skati



# Labošanu veic skatā

The screenshot shows a Microsoft Access form titled "Pasūtījumi". The form is divided into three sections: "Form Header", "Detail", and "Form Footer". Each section contains a table structure with columns for "Pasūtījuma ID", "Klienta ID", "Darbinieka ID", "Pieņemšanas datums", and "Izpildes datums". Red arrows point to the table grids in each section, indicating where modifications can be made.

Form Header				
Pasūtījuma ID	Klienta ID	Darbinieka ID	Pieņemšanas datums	Izpildes datums

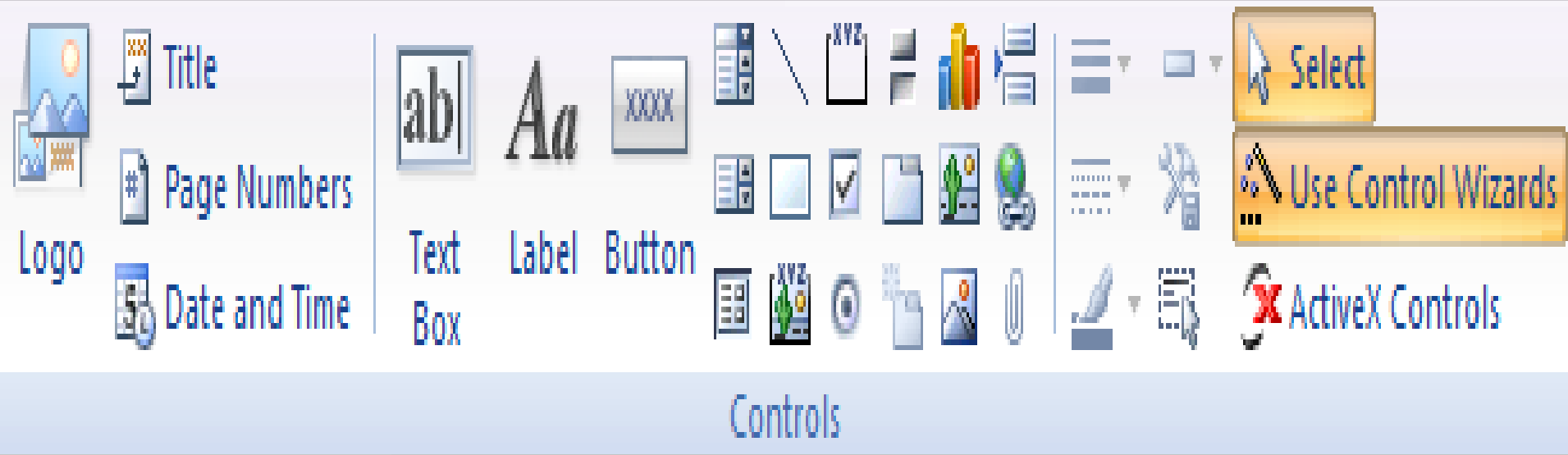
Detail				
Pasūtījuma ID	Klienta ID	Darbinieka ID	Pieņemšanas da	Izpildes datun

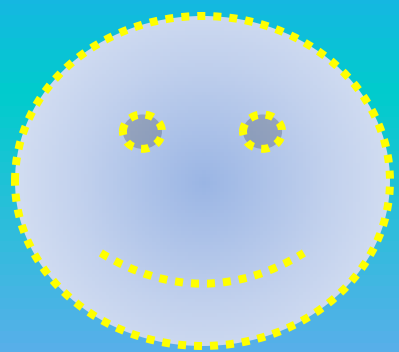
  

Form Footer				



# Rīki labojumu veikšanai





Paldies par uzmanību!

Paldies par uzmanību!